

Remotely Connecting to Your Desktop (Phantom)

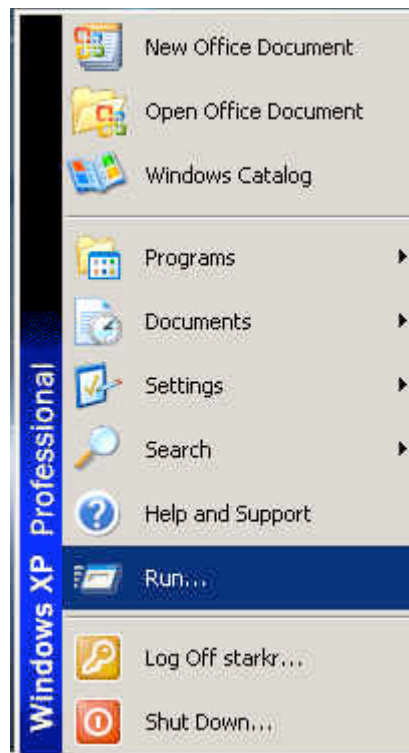
You can connect to your work desktop and, in turn, your staff folder from home or anywhere outside the district via the Internet. The following are important considerations...

- You need broadband for this to work effectively (cable or DSL)
- A limited number of people can connect at one time (around 20)
- Don't rely on this tool because when you need it most so do others
- You cannot "exchange" files directly from Phantom back and forth with home computer

How to Connect with Windows

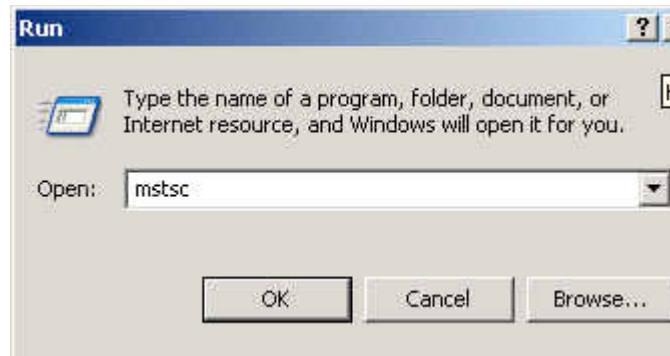
Step 1:

Go to the **Start** button and then select **Run**.



Step 2:

In the **Run** window type **MSTSC** and then click **OK**.



Step 3:

In the connection window type *phantom.peninsula.wednet.edu* and then click on **Connect**



Step 4:

In the next window you are remotely connected and just have to login using your district login and password.

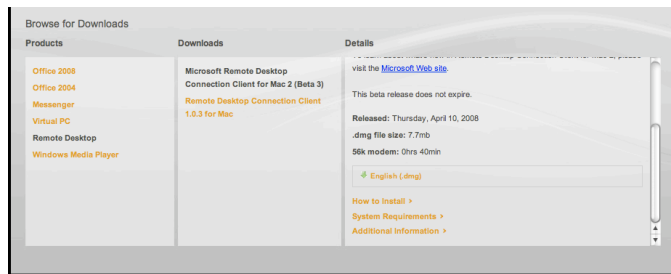


How to Connect with Mac

Step 1: (One time step)

Go to the following link

http://download.microsoft.com/download/9/a/2/9a2182b3-44a4-44c0-8fe1-03f39f81fff0/RDC200_ALL_Beta3.dmg

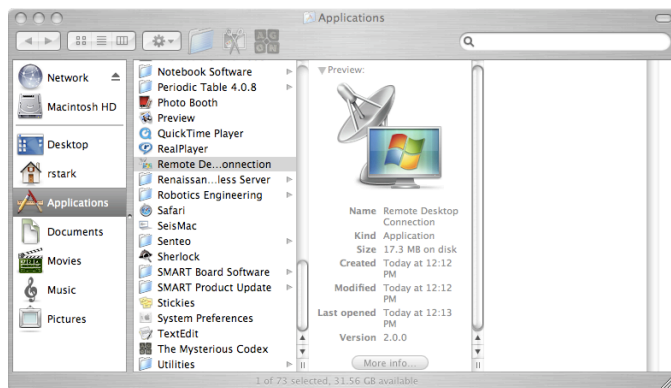


Once the program is downloaded then proceed with installation as with any other Mac application.

You will be downloading and installing a program to connect to your remote desktop.

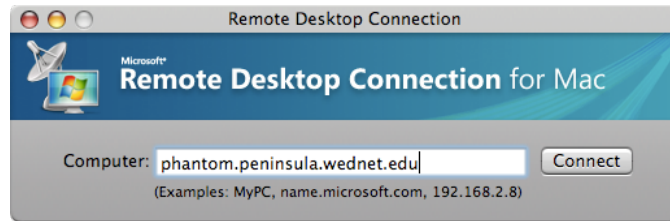
Step 2:

Find and open the **Remote Desktop Connection** application via **Finder** and **Applications**.



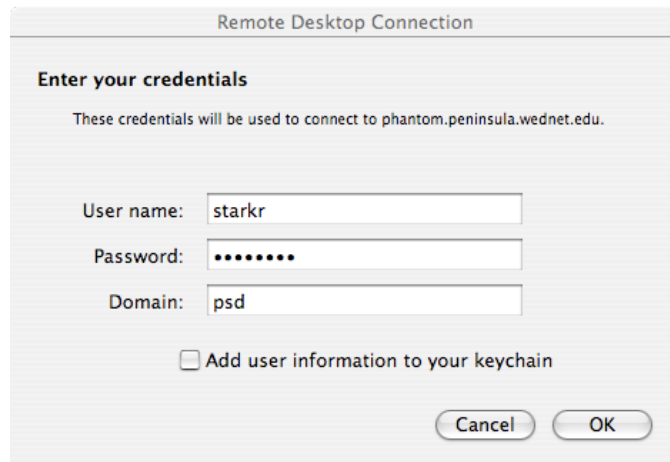
Step 3:

In the window that appears type *phantom.peninsula.wednet.edu* in the box and click on **Connect**.



Step 4:

In the next window log in using the same district login you use at work and then click **OK**.



Note:

If you get the following message then just click on **Connect**.

